

CleanSweep®

Simply Managing Row Cleaners Could Give You 11.8 Bu/A*

When residue is not removed from the path of the row unit, expect yield loss. Pinning residue in-furrow can wick moisture away from the seed delaying emergence. In-furrow, incorporated, and surface residue increases disease pressure.

Manually Adjusting Floating Row Cleaners

Setting your row cleaners so that they adequately clear the path in front of the row unit while not trenching is a time consuming, often painful process. If you don't have the right setting at the beginning of the field, how many times are you willing to stop in the field to get them set correctly?

Simple Adjustments From the Cab

By adding CleanSweep to floating row cleaners, adjust your row cleaners in the cab as often as necessary to get the best results without sacrificing planting time. Need more pressure to get a cleaner path? Need less pressure to prevent trenching? Simply adjust the pressure from the cab and keep planting.



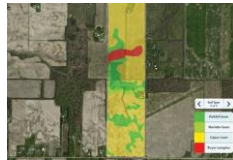
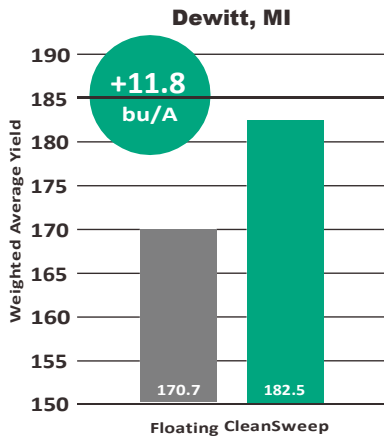
Learn more at pssag.com



See The Difference

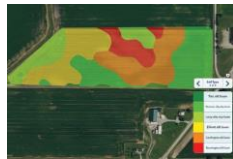
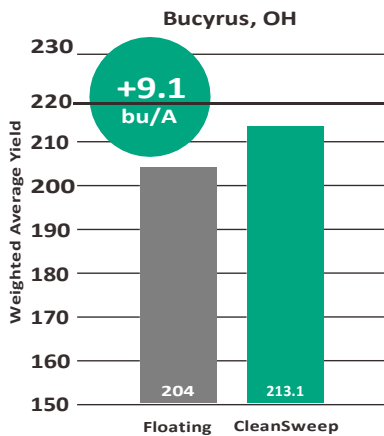
How much yield could you gain by using CleanSweep? Whether no-till or conventional, CleanSweep provides an advantage. In our 2016 Precision Planting plots, CleanSweep gave us an average 6.9 bu/A advantage over floating rowcleaners.

2016 Precision Planting Residue Studies



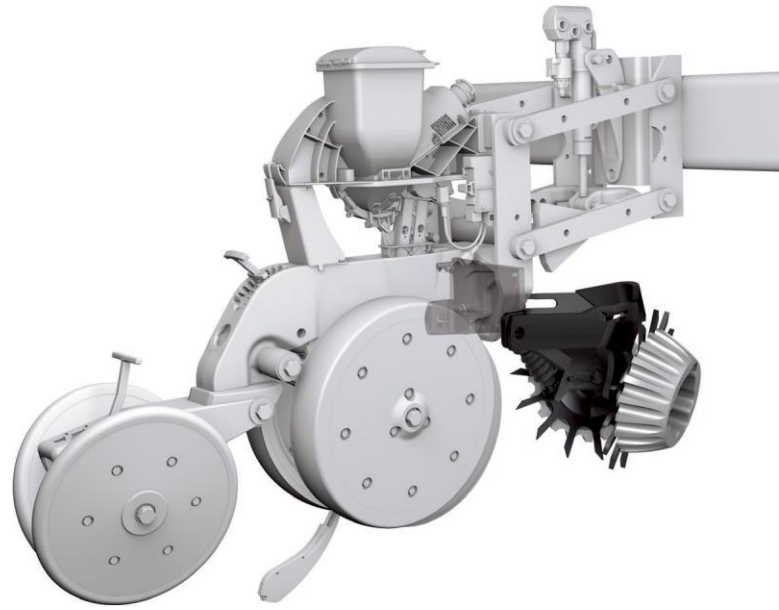
Planting Conditions:
Very dry at the time of planting, with 1" to 2" clods.

Growing Conditions:
Around the time corn hit the V4 stage, rainfall was only .60" for 30 days, then above average rainfall was observed in the area from 7/23 through 8/31. Temperatures were 3-5 degrees above normal in August.



Planting Conditions:
Planting conditions were decent, but a little on the damp side.

Growing Conditions:
Weather was fairly dry for the duration of the growing season, with 3"-5" below normal rainfall for the area. No fungicide was used. Corn was side dressed with 175# of anhydrous.



Specifications

ROW CLEANERS

Available on specific MARTIN-TILL®, YETTER®, and RBE® and BOSS® floating row cleaners. Contact your Precision Planting dealer for additional compatibility information.

OPTIONAL

3.5" Treader Wheels



Learn more at pssag.com

